

None

Ornamentation (paratabulation and processes)

Heavy



No trace of paratabulation except archeopyle

Faint traces of sutures or incipient processes no more than 3 μ m

Well-expressed paratabulation but not extending to form full processes or ectophragm

Strong processes and/or well-developed ectophragm

Ovoidal

Shape

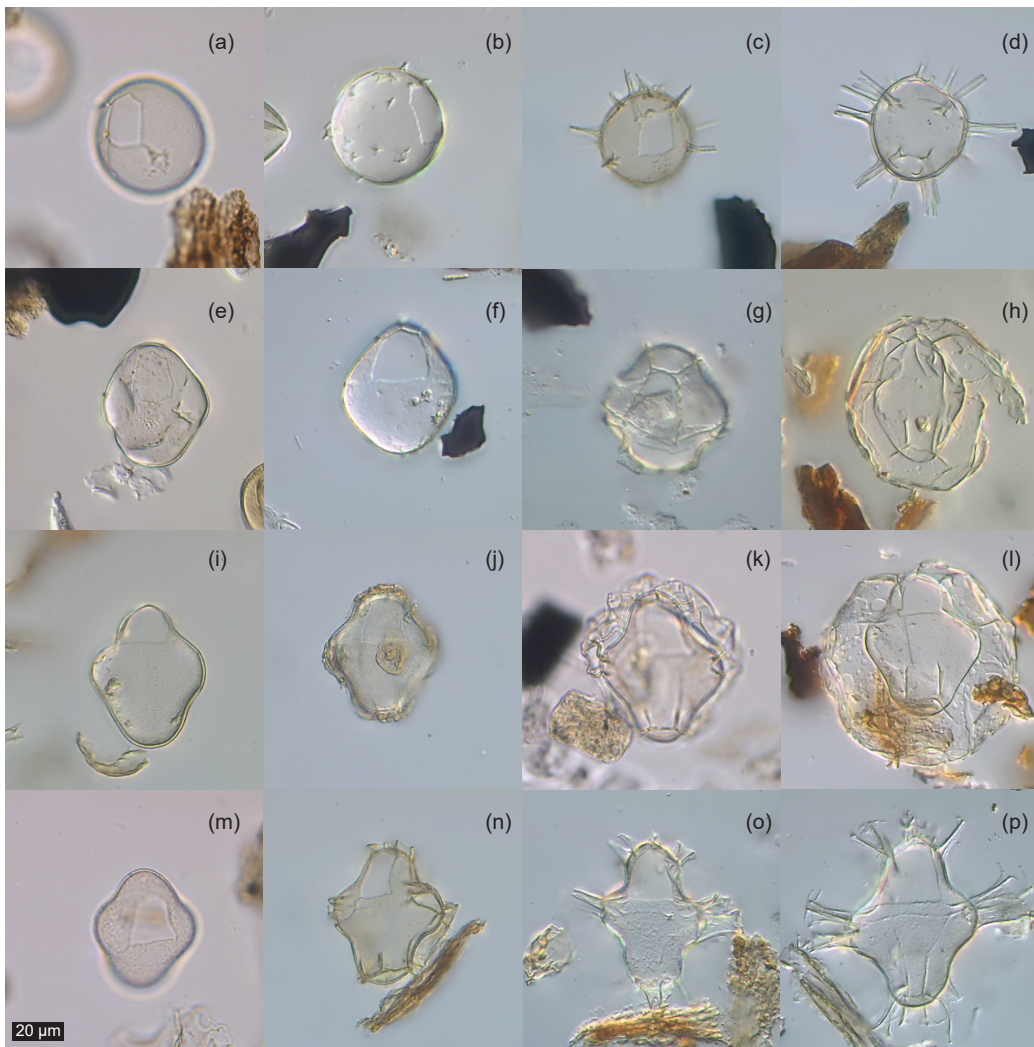
Cruciform

Circular to ovoidal cross section

Rounded rhomboidal cross section

Rounded cruciform cross section

Strongly cruciform cross section



20 μ m