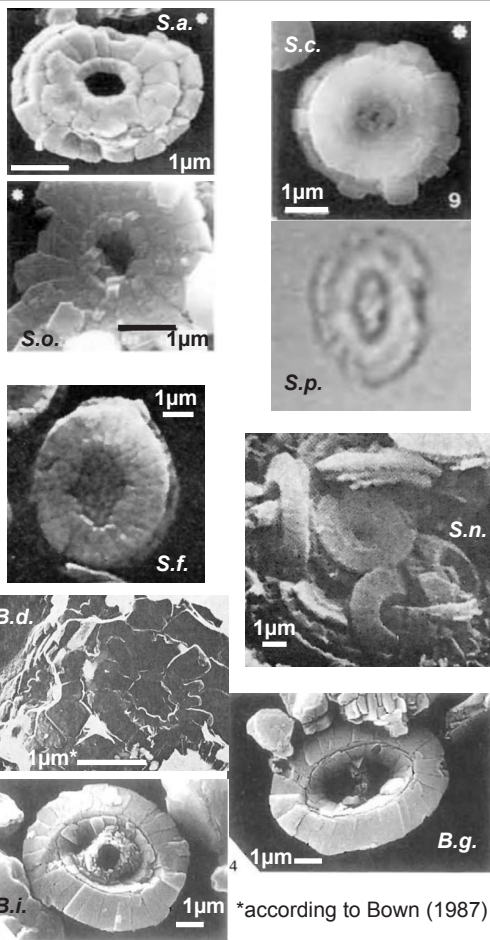
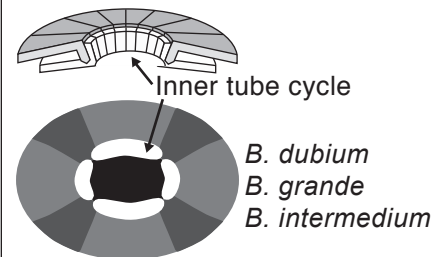
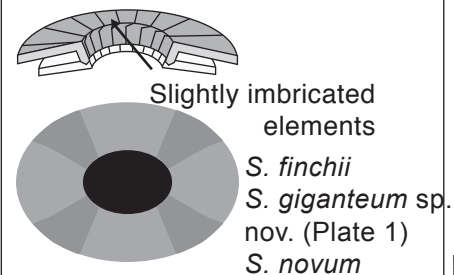
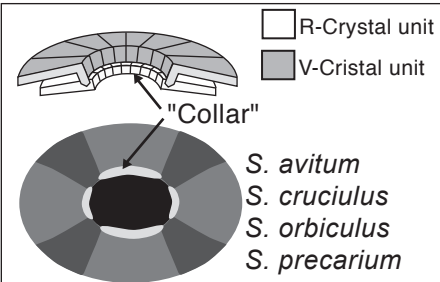


Structure of the coccoliths and optical behaviour in crossed-polars

Holotypes micrographs

Original or emended diagnosis



Similiscutum avitum: 'A small, normally to broadly elliptical species of *Similiscutum* with an open central area.' de Kaenel & Bergen 1993, p. 194

S. cruciulus: 'A small to medium-sized, subcircular species of *Similiscutum* with a small central opening spanned by a cross, which may support a distal projection.' de Kaenel & Bergen 1993, p. 195

S. orbiculus: 'A very small to small, subcircular to circular species of *Similiscutum* with a small central perforation.' de Kaenel & Bergen 1993, p. 197

S. precarium: 'A small to medium sized, normally to broadly elliptical species of *Similiscutum* with an axial central cross which may support a stem.' de Kaenel & Bergen 1993, p. 198

S. finchii: 'A large normally elliptical species of *Biscutum* with a modified radiating placolith structure. The distal shield is composed of non-imbricating elements with a gentle outer slope forming the shield and a steep inner edge producing a deep central area. The sutures are sharply kinked at the point from which the elements slope and they also have a slight anticlockwise precession due to the kinking. The proximal shield is only slightly smaller than the distal shield its elements are non-imbricating with sutures only slightly deviating from the radial pattern. The central area is filled with granular elements.' (Bown 1987, p. 42) Mattioli et al. 2004

S. novum: 'A species of the genus *Biscutum* with an imperforate central area, the central spine is attached all around the rim margin. The presence of a furrow is characteristic of the proximal face.' (Goy 1979, p. 42) Mattioli et al. 2004

Biscutum dubium: 'Elliptical coccoliths formed of 2 closely fitted shields; the principal shield (slightly broader than the proximal shield) is indented in its centre to permit the passage of a central spine with an axial canal.' (Noël 1973, p. 117) Bown 1987

B. grande: 'A large, normal to narrowly elliptical species of *Biscutum* possessing a bicyclic distal shield and a relatively large central area spanned by a thin bar bearing a central spine base.' Bown 1987, p. 44

B. intermedium: 'A broadly elliptical species of *Biscutum* which possesses a deep central area, lined with an inner distal cycle of elements, and spanned by a broad bar which is aligned at about 20°, clockwise, to the minor axis of the ellipse; the bar is perforated by a large central, circular or elliptical hole or spine base.' Bown 1987, p. 47

*according to Bown (1987)