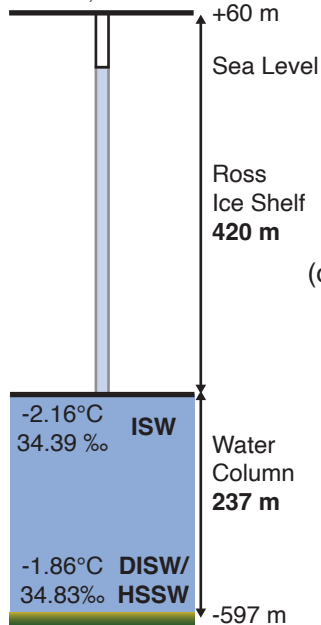


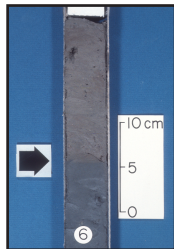
(a)

RISP Site J-9

82°22.5'S, 168°37.5'W



(b)

RISP 77-6

Upper Unit: Sloppy to soft, light olive gray diatomaceous clay with sand, granules, pebbles, and light-colored diatomaceous soft sediment clasts. A color change (black arrows) marks the boundary between the upper and lower units.

Lower Unit: Soft to firm, dark greenish gray diatomaceous clay with sand, granules, pebbles, and light-colored diatomaceous soft sediment clasts.

(c)



RISP 78-8

RISP 78-7