



Supplement of

Miocene Climatic Optimum and Middle Miocene Climate Transition: a foraminiferal record from the central Ross Sea, Antarctica

Samantha E. Bombard et al.

Correspondence to: Samantha E. Bombard (sambombard@umass.edu)

The copyright of individual parts of the supplement might differ from the article licence.

Table S1. Site U1521 age model datums (Perex et al., 2021; Marschalek et al., 2021). Datums include Magnetic Polarity Reversals (MPR), Diatom First Appearance Datum (FAD), Diatom Last Appearance Datum (LAD), Diatom absence, unconformities, Sr of shells, and Ar of hornblende.

Depth mbsf	Depth Error	Event	Event Description	Type	Age (Ma)	Age Error	Reference
65			<i>Nitzschia denticuloides</i>	absence	13.6		this study
84.99	85.55	A	<i>Denticulopsis simonseni</i>	FAD	14.48	14.14	Marschle et al (2021), 14.2 Ma used
84.99	85.72	B	<i>Denticulopsis hyalina</i>	FAD	14.76	14.73	Marschle et al (2021)
84.99	85.55	C	<i>D. lauta</i>	FAD	15.72	14.99	Marschle et al (2021)
84.99	85.55	D	<i>A. ingens</i>	FAD	15.83	15.52	Marschle et al (2021)
85.34			RSU4	Unconformity	15.83	14.48	Pérez et al (2021)
105.9	0.4	E	C5Br/C5Cn.1n	MPR	15.994		Marschle et al (2021)
141.92		F	Shell	Sr	16.039	0.25	Marschle et al (2021)
145.135		G	Shell	Sr	16.211	0.24	Marschle et al (2021)
145.135		H	Shell	Sr	16.272	0.24	Marschle et al (2021)
182.7		I	Shell	Sr	16.117	0.25	Marschle et al (2021)
182.71		J	Shell	Sr	16.319	0.23	Marschle et al (2021)
183.825		K	Shell	Sr	16.071	0.25	Marschle et al (2021)
184.215		L	Shell	Sr	16.196	0.24	Marschle et al (2021)
184.215		M	Shell	Sr	16.149	0.25	Marschle et al (2021)
196.785		N	Shell	Sr	16.257	0.24	Marschle et al (2021)
207	2	O	C5Cn.1n/C5Cn.1r	MPR	16.261		Marschle et al (2021)
220.23	0.2	P	Hornblende	Ar	16.74	0.9	Marschle et al (2021)
270.03	0.2	Q	Hornblende	Ar	17.08	1.2	Marschle et al (2021)
272.65		R	Shell	Sr	16.304	0.23	Marschle et al (2021)
286.1		S	<i>N. grosspunctata</i>	FAD	15.94	15.87	Marschle et al (2021)
286.1		T	<i>F. maleinterpretaria</i>	LAD	16.41	15.5	Marschle et al (2021)
286.1		U	<i>S. cheethamii</i>	FAD	16.94		Marschle et al (2021)
286.1		V	<i>D. maccollumili</i>	FAD	17.05	16.77	Marschle et al (2021)
286.1		W	<i>N. 17 Schrader</i>	FAD	17.16	16.94	Marschle et al (2021)
286.3			C5Cn.1r/C5Cn.2n	MPR	16.351		Marschle et al (2021)
286.3			RSU4a	Unconformity	16.3	17	Pérez et al (2021)

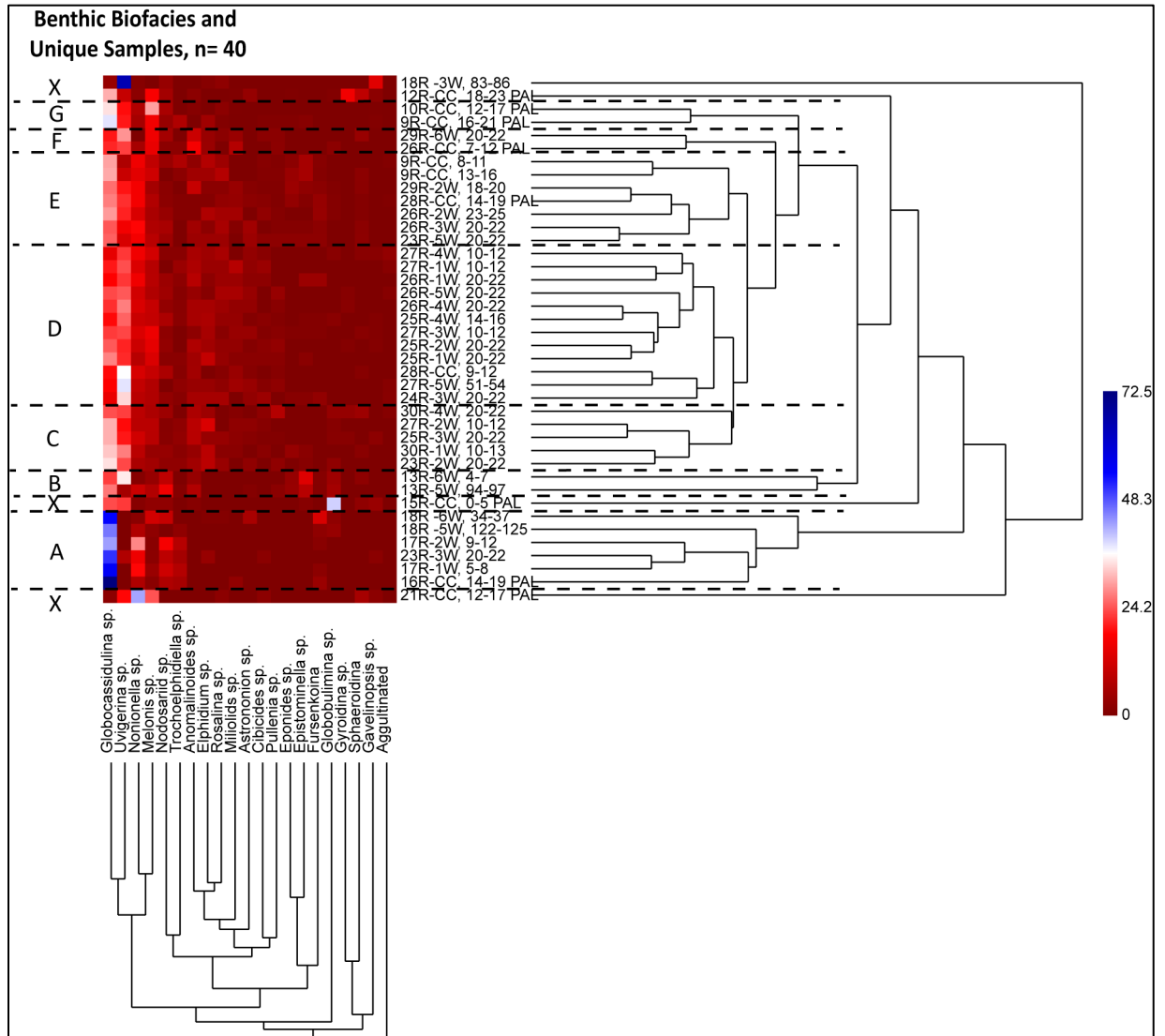


Figure S1. Q – R mode two-way cluster analysis for the 40 samples containing at least 48 benthic specimens. A-G denote benthic biofacies while X represents seven unique samples X1-X4.